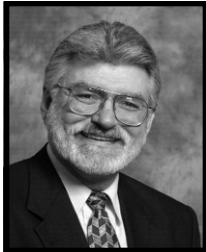


Grosse Pointe NOW

Volume 11 Issue 4

www.grossepointecity.org

Fall 2011



Mayor Dale Scrace

City Council Members

Christopher Boettcher
Donald Parthum Jr.
John Stempfle
G. John Stevens
Christopher Walsh
Jean Weipert

City Personnel

- Peter Dame
City Manager
- Julie Arthurs
Asst. City Manager/Clerk
- Kimberly Kleinow
Finance Director
- James Fox
Public Safety Director
- Paul Weitzel
Public Service Director
- Gary Huvaere
Public Service Supervisor
- Frank Schulte
Public Service Supervisor
- Christopher Hardenbrook
Recreation Director

Municipal Judge

- Russell Ethridge

Phone Numbers

City Hall 885-5800
Public Safety 886-3200
Municipal Court 343-5262
Neff Park Office 343-5257

Hello Fall!

Autumn has arrived in the City. You can feel it in the air and see it in the abundant trees ablaze with color. Time for some seasonal reminders for leaf collection below and snow removal, see page 2.

Get out and enjoy the weather while it lasts!

Leaf Collection Procedures

The procedure used last season for leaf collection will continue. The City will utilize collection system consisting of a broom and chute which scoop leaves from the edge of the street. Instead of City personnel vacuuming the fallen leaves from between the sidewalk and curb, residents are asked to rake leaves into the street for their scheduled leaf collection day so leaves can be “pushed and scooped” into a chute attached to a rubbish truck for pickup. This pickup method has reduced the overall time spent vacuuming leaves by City crews resulting in a cost savings and eliminating overtime, while providing a weekly leaf pickup on a scheduled date. For further details and to review the Leaf Pickup Schedule with map, please refer to the leaf collection flyer inserted in this newsletter. Should you have additional questions regarding the new procedure, please contact City Hall. Listed below are a few important requirements necessary for the new leaf collection program to be a success:

- Leaf pickup begins on *Monday, October 17*. The pickup days are Monday, Tuesday, Wednesday and Thursday. Please see map on leaf flyer insert or City website to find out what your pickup day is.
- Please alert your landscaper about the date of your pickup and the placement of the leaves next to the curb on the street.
- Place or rake loose leaves into neat piles on the edge of the street after 4 pm on the day before your scheduled pickup. Leaves left on the parkway grass area will not be picked up.
- Street parking is not allowed on leaf collection day. Any obstructions caused by cars, construction vehicles, etc. will be by-passed and leaves will not be picked up until the next regularly scheduled pickup date.
- The leaf collection period will run from mid-October through early December. (Exact dates are dictated by weather conditions)



City News

Snow Removal Procedures

In 2010, an official snow removal and salt application policy was adopted by the City Council. In anticipation of the upcoming winter season, listed below are some points for residents to be aware of.

Plowing and Salting - Streets will be plowed when snow fall is 3 inches or greater. Streets with less than 3 inches of snow will not be plowed, but will be spot salted. The City does not salt streets to a bare road surface.

Sidewalks - The clearing of snow from sidewalks adjacent to private property is the responsibility of the property owner or resident. As a courtesy, when snowfall accumulation is greater than 2 inches, the City will clear sidewalks during regular working hours, 5:30am to 4 pm, Monday through Friday.

City personnel take every precaution to ensure that snow is removed in a safe manner but sometimes snowplowing results in property damage. Residents are reminded that the City is not responsible for damage to items in the public right-of-way such as sprinkler heads, shrubbery, plantings/planters, or any decorative materials.

The Public Works and Public Safety Departments will continue to monitor specific weather and road conditions to ensure the City roads are safe during snow removal season.

Items to Remember

- Parks and Recreation Fall & Winter programs are listed on pull out pages 3 & 4.
- Trick or Treating hours in the City are Monday, October 31 from 5:30 - 8:00 pm.
- City General Election to be held on November 8. All residents vote at Maire School. Polls open from 7 am to 8 pm - see page 6.
- City Offices closed on November 24 & 25 for the Thanksgiving holiday.
- City Offices closed on December 23 & 26 for the Christmas holiday.
- City Offices closed on December 30 & January 2, 2012 for the New Year holiday.

Upcoming Meetings

Council Chambers, 17145 Maumee

Oct. 17	City Council	7:00 pm
Nov. 14	City Council	7:00 pm
Dec. 19	City Council	7:00 pm

Rubbish Pickup for Winter Holidays

- ◆ Rubbish pickup will be delayed one day the week of December 26 for Christmas holiday.
- ◆ Rubbish pickup will be delayed one day the week of January 2 for New Year holiday.

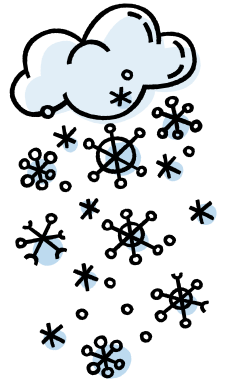
Recycling Pickup for Winter Holidays

- ◆ Recycling pickup will be delayed one day the weeks of December 26, 2011 and January 2, 2012.

Size Limit for Rubbish Containers

The size limit for rubbish containers is 32 gallons in size or 50 lbs. in weight when loaded. If the container is too large, the City will post a label on the too large container as a warning and will not pick up the garbage if the excessive container continues to be used.

All empty rubbish containers (recycling bins/carts and yard waste containers) must be removed from the curbside by the evening of your regular collection day. Thank you.



Parks and Recreation

Fall Programs

Platform Tennis Reservations

For the 2011-2012 season, residents will need to purchase a \$75 seasonal membership or a \$10 daily pass to play. Seasonal membership applications are available at City Hall, the park office, and from the City's website. The platform tennis courts can be reserved up to three days in advance. **All reservations must be made by 3:00 pm, Monday through Friday.** Call the department office about the scheduling process for court time or to get the court access code. Please have your park pass and membership number available.

Platform Tennis Reservation Play

October 1 to April 30

Everyday, 8:00 am – 10:00 pm

Important Marina Information

If you currently have a boat in the marina, please remember the following dates:

November 1

- Boats must be removed from the marina
- Renewal applications due with 50% deposit
(a \$5 per week late fee will be enforced)

February 1

- Remaining 50% of well deposit due

For those on the waiting lists, keep an eye out for the waiting list renewal cards which will be mailed to you after the New Year, January 1.

Halloween in the Village

Kids will be able to fill their candy bags even more as the Village hosts its annual Halloween event. There will be trick-or-treating and a costume contest hosted by the Village Association and the City's Parks and Recreation Department.

Village Trick-or-Treating

Monday, October 31

3:30 – 4:45 pm



Kayak Renewal Information

- If you are on the waiting list for the kayak racks, a waiting list renewal card will be sent to you after January 1. This card must be returned to the City by **March 1** to maintain your spot on the waiting list.
- For those residents who had rack space in the 2011 season, your renewal applications with the season fee of \$100 is due **March 1**. If payment is not received by that date, your space will be offered to the waiting list.

Parks and Recreation

Winter Programs

Eighth Annual Winter Fest and Pig Roast

Our Winter Fest is in its eighth year and is a wonderful opportunity to take pleasure in the winter weather. You will be able to experience various activities like petting exotic animals, curling, arts and crafts, ice sculpting, ice skating, a hockey shoot out and broomball. We will also have a catered meal for your enjoyment. Let it snow!

Neff Park Winter Fest

Saturday, January 28 - Activities begin at 1:00 pm



Ice Rink and Warming Room

What would winter be without outdoor ice skating? For those who don't take to the cold, the warming room will be available. The warming room will be closed on holidays.

Neff Park Ice Rink Warming Room

December 2011 – March 2012

Used Ice Skate Donation

This winter, we will continue to collect used ice skates and make them available for residents to use. All sizes and types in good condition will be accepted. Please bring your skates to the park office.



Beginner Skating Lessons

Our lessons are for kids who have very little skating knowledge. Kids will learn the basic skills necessary to propel themselves on the ice. We offer two sessions with a choice of two meeting times. Register early; class space is very limited. \$15 per student.

Registration opens Monday December 5, 2011.

Session I: January 7, 14 and 21, 2012

Saturdays, 3:00 – 3:45 or 4:00 – 4:45 pm

Session II: February 4, 11, and 18, 2012

Saturdays, 3:00 – 3:45 or 4:00 – 4:45 pm

Grosse Pointe Park Okulski Theater

City residents are welcome to use Grosse Pointe Park's movie theater from **November 15 to April 15**. Resident must show a valid pass to be admitted. No guests. For movie information or additional questions, call 313-822-4313 or visit www.grossepointepark.org.

Miscellaneous News

2011 Beautification Awards

The Beautification Commission is pleased to announce the Beautification Award winners for 2011. Each property was reviewed by Commission members and determined to have overall aesthetic appeal. The awards were presented to the proud property owners by the City Council Members and the Commission during a ceremony held on September 26. Many thanks to this year's winners for making Grosse Pointe a beautiful place to live.

Further appreciation is expressed to the volunteer members of the Beautification Commission for all their hard work. The members did a spectacular job planting flowers, weeding flower beds and dead heading plants at Neff Park. Plus, the Commissioners help to maintain the planted areas around the two City signs along Jefferson Avenue. Members of the Grosse Pointe Beautification Commission are Derek Stratelak, Chair, Andy Hartz, Vice-Chair, Sue Antonelli, Christopher Boettcher, Susan Budrys, David Calcaterra, Susan Hartz, Joseph Jennings, Tracy Lyon, Jeff Petersen, Betsy Rowe and Mary Scrace.

The pictures shown below are just a sample of the lovely homes honored. To view all the homes, check out the article under "News" on the City's website or stop by City Hall to see the collage board of the winners on display in the lobby.

Residential

1 Cameron Place	Thomas & Sharon Shumaker
10 Dodge Place	Blake Residence
606 Lakeland	Fran Twiddy
410 Lakeland	Craig & Karen White
601 Lincoln	Arthur & Rebecca O'Reilly
10 Rathbone	Michael & Mary Farley
889 Rivard	Frank & Tina Lagrou
379 St. Clair	C J Ruffing & K. Moore
4 Stratford Place	Brian & Elizabeth Connors
673 University Place	Todd & Amy Webster
250 Washington	Gail & Lois Warden

Commercial

468 Cadioux Road	Beaumont Health Systems GP
383 Fisher Road	Dr. William Jennings
18050 Mack Ave.	Grosse Pointe Dermatology

Special Recognition

Sycamore Lane Homeowners Association - award presented for "Best Block" (pictured below)



379 St. Clair



889 Rivard



More City News

GENERAL ELECTION — November 8, 2011



AM I ELIGIBLE TO VOTE?

You must be registered to vote 30 days prior to an election to be eligible to vote. The registration deadline for the General Election is *October 11*. You can verify your voter registration status at the State of Michigan website at www.michigan.gov/vote or at your local City Clerk's office.

WHAT IS ON THE BALLOT

The following races will be on the November ballot: Mayor, three City Council Member positions, Municipal Judge, two Grosse Pointe School Board member positions.

ABSENTEE BALLOTS

Absentee ballot applications are available on the City website under City Clerk, Downloads or at City Hall for those ages 60 and over or persons who will be out of town during voting hours. If you plan to be out of town, please make application for an absentee ballot as soon as possible.

SAMPLE BALLOTS

Sample ballots are available but supplies are limited. Pick up at City Hall or review on the City website under City Clerk, Elections.

PICTURE I.D. REQUIRED

Every Michigan voter who applies to vote at the polls must show picture identification or sign an affidavit attesting that he or she is not in possession of picture identification. Voters can satisfy the picture I.D. requirements by showing a Michigan driver's license or a Michigan personal identification card. The new Electronic Poll Book computer used at the polls allows election inspectors to scan a drivers license to access your voter registration record. For more examples of acceptable picture identification, please see the City website, under City Clerk, Downloads or stop by City Hall.

WHERE DO I VOTE?

All registered voters who live in the City vote at: **Maire School - 740 Cadieux Rd. Hours: 7:00 am to 8:00 pm**

EXTRAS - Please ensure you are properly registered, bring picture identification to the polls and familiarize yourself with the candidates and proposals on the ballot. Thank you in advance for your patience and for helping make Election day run smoothly.

If you have any questions regarding the upcoming election, please contact the City Clerk's office at 885-5800 or check online at www.grossepointecity.org under City Clerk, Elections.

POLITICAL SIGNS

The Grosse Pointe sign ordinance, Sections 58-7 & 58-9 addresses the regulations for placing political signs on residential lawns. During this election season, residents are encouraged to review the following key points to help keep Grosse Pointe safe and looking beautiful. Thank you.

1. Temporary signs may not exceed 30 inches in height and must be 25 feet away from the mid-point of an intersection.
2. Temporary signs may not be placed so as to obstruct anyone from walking or biking, or to obstruct a driver's view of any street or sidewalk.
3. Temporary signs may not be placed on public property which includes the street right-of-way. The street right-of-way is the area between the curb and the sidewalk in front of your home. Signs in violation will be relocated onto private property. Repeat violations may cause the sign to be removed and stored for pick up at City Hall.
4. No more than five temporary signs are allowed on any residential lot.